



BETHEL MESSENGER

Bethel Lutheran Church Newsletter

June 2025

FROM PASTOR MOLLY

Hello Beloved Children of God!

Summer is beginning which means the season for traveling is underway. I pray for you all to have safe travels during this season. As you travel or as you stay home, pay attention to how you are experiencing God within every person you meet, within every experience you have, and within every aspect of creation you see.

And remember, God appointed us all stewards of his creation, which means we are caring for God's property, not our own, in our travels and in our everyday lives. Everything in this world is God's - the air we breathe, the land we walk on, the house we live in, the children we raise, the food we eat, the drink we consume, the hobbies we enjoy, and the money we earn.

It can be incredibly freeing to realize that everything we have is God's. Freeing to realize the food and drink we consume is God's, meant to sustain us in this life. Freeing to realize the air we breathe and the land we feel under our hands and feet is God's, meant to bring us joy, relaxation, and awe. Freeing to realize the money we earn is God's, meant to help us and everyone praise God in freely giving and receiving, but also freeing because it isn't meant to be a chain that ties us down, stresses us out, making us hoard it or spend it only on ourselves.

It is freeing to realize everything we have is God's and to give of all that is God's will not only bring us freedom but also joy and life in the here and now.

So, as this new season begins I want you to not only pay attention to how you are experiencing God, but also how you are helping others experience God by being good stewards of all that is God's, and living into the freedom God promises through Christ Jesus's life, death, and resurrection.

May God bless you and keep you safe this summer!

Love,
Pastor Molly B. Wills

MISSION & MINISTRIES

A note about Common Cup Ministry, Inc.

The Thrift Shop of Common Cup Ministry offers quality, gently used items—and can use your help! When you donate, you're not just giving items a second life; you're supporting individuals and families in need right here in McLeod County. Best of all, every dollar from our sales stays local and directly benefits our community. Location: 712 11th ST E Glencoe, MN
Hours: Tuesday-Friday 11:00 a.m. to 3:00 p.m.

Blood Mobile cookies

Bethel has been asked to provide cookies for the Blood Mobile on Wednesday, June 11. If you would like to donate three dozen cookies, preferably homemade, please contact Diane Horsman.



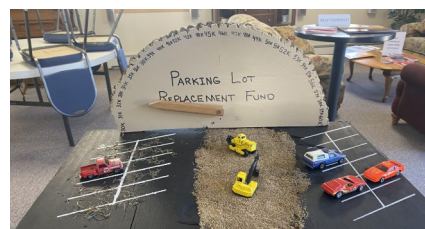
Celebration Bank

The Celebration bank is back for the summer months! Everyone is our congregation, no matter your age, is invited to share their celebrations, big or small. You can contribute any amount you like, whether it's coins, bills, or checks. At the end of the summer, we will gather all the contributions and donate them to the parking lot fund. In the past, our Celebration Bank collections have also supported ELCA Good Gifts and Green Lake Lutheran Ministries. We can't wait to celebrate with you!



Bethel Church Parking Lot Fundraiser

We are raising funds to rebuild the parking lot. Our goal is to raise \$30,000, in addition to the \$30,000 already allocated from church funds. We aim to complete this project in September. Please consider donating to this much needed project. You can scan the QR code to access the online Parking Lot Fund, or you may place your donation in the offering plate. If you choose to donate by check or cash, please indicate that your contribution is for the parking lot. A mock-up of the parking lot is displayed in the narthex to help track our progress. Thank you for your support!



Scan here to
access the
Church Parking
Lot Fund.



GOD has a MINISTRY for YOU in this CHURCH and a MISSION for YOU in the WORLD.

Driving Away Hunger-MEFS Mobile Outreach

Driving Away Hunger aims to address transportation and mobility issues related to food access in our communities. Our Mobile Outreach vehicle is stocked with shelf-stable pantry items, fresh produce, frozen proteins, dairy, grains, and bakery goods. Please remember to place your orders before the delivery dates, as all will be pre-packed during the winter months. A limited number of walk-up portions will be available at each delivery site. Our staff will assist anyone who is unable to safely enter the vehicle for shopping. However, staff members are not allowed to carry food inside a residence. Full grocery distributions are available once a month per household, and you may visit different distributions sites once per week. All sites are open to the public. Go to www.mcleodemergencyfoodshelf.org for schedule change announcements. Don't forget to follow us on Facebook <http://facebook.com/McLeodFoodShelf>. If you have any questions, please call 320-864-2088!

STOP & SHOP THE BUS AT NO COST TO YOU!



MEFS Mobile Outreach

SUMMER SCHEDULE

WHEN: THURSDAY

JUNE 12 & 26

2:00 p.m. to 3:45 p.m.

WHERE:

**Bethel Lutheran Church
parking lot**

TO ORDER ONLINE &

STAY UP-TO-DATE

SCAN HERE:



Ordinary Time at Camp House



Camp House, GLLM's most unique site, invites you to Ordinary Time. Join us for a community gathering with our guest pastors, artists, and musicians. Each day offers opportunities for learning, creating, playing, and being present. Devotions and worship are blended with conversations, educational sessions, and artistic classes. You can enjoy reading on the beach, canoeing around Lake George, or exploring sights along the North Shore. Ordinary Time runs from June 14 to July 18. You can choose when to come and how long to stay—whether for a few days, a full week, or even the entire month!

gllm.org/ordinary-time

Bethel Lutheran Teens make communion bread



FAITH & FELLOWSHIP



Birthdays

3 Katie R.
4 Sarah R.
5 Etta H.
8 Carolyn B.
11 Maggie K.
12 Jacob D.
14 Avery B.
15 Jim M.
16 Brayden M.
16 Alek H.
17 McCoy H.
20 Matt P.
30 Jim M.

Baptism Birthdays



10 Dick D.
11 Bruce Y.
11 Eleanor G.
16 Stacy M.
18 Matt M.
22 Kim W.
23 Lois S.
27 Roger M.
30 Maggie K.

Bethel Book Club

June-Gunflint Falling: Blowdown in the Boundary Waters by Cary J. Griffith

Discussion date: June 18 at 6:00 pm

On July 4, 1999, in the Boundary Waters Canoe Area Wilderness (BWCAW), a bizarre confluence of meteorological events resulted in the most damaging blowdown in the region's history. Originating over the Dakotas, the mid-summer windstorm developed amid unusually high heat and water-saturated forests and moved steadily east, bearing down on Fargo, ND, and damaging land as it crossed the Minnesota border. *Gunflint Falling* tells the story of this devastating storm from the perspectives of those who were on the ground before, during, and after the catastrophic event.

"Women in the Bible" A learning opportunity!

The Bethel WELCA group is sponsoring and welcoming **all women** to a Bible study on Tuesdays June 10, 17, and 24 from 9:00 a.m. to 10:00 a.m. at the church. The sessions will take a personal look into the lives of some of the Bible's most faithful women. Their struggles and temptations are the same trials faced by all believers at all ages. What can we learn from them? The God whom they were so committed is the same God who continues to mold and use ordinary people like us today. If you have any questions, please ask Jan Smith. (John MacArthur's book- *Twelve Extraordinary Women: How God Shaped Women of the Bible and What He Wants to Do with You*-will be used as a resource and guide.)

Fellowship by the Fire

Join us on Sunday, June 22, at 6:00 p.m. Hot dogs will be provided. Please bring a dish to share along with your lawn chairs or blankets.

Upcoming book club selections

July-More or Less Maddy

by Lisa Genova

August-The Anthropocene Reviewed: Essays on a Human-Centered Planet

by John Green

September-I Cheerfully Refuse

by Leif Enger

October-James by Percival Everett

FINANCIAL CORNER

4 convenient ways to give

1. Vanco Giving

Use Vanco for your regular contributions—donations will be automatically deducted from your checking, savings, debit or credit card. **This program provides convenience for you and ensures that our congregation receives consistent support!** Say goodbye to checks and envelopes! If travel, illness or other circumstances prevent you from attending services, Vanco allows your donations to continue without interruption. To get started fill out an Authorization form (along with a voided check) and return it to the church office or go to www.lpbethel.org under “Give” and sign up yourself.

2. Text + Give

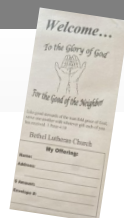
Make a contribution in seconds with a text message! Text giving is quick, easy, and flexible. Whether you want to give right away, make your weekly offering, or respond to special appeals, you can do it all in just a few seconds. Registration using your phone is simple, and you have the option to set up recurring gifts. To donate, just text the dollar amount to **866-298-7547**.

3. Bethel Offering Envelope

Offering envelopes are available on the wall in the narthex. Please fill out the front of your envelope, including your assigned envelope number (found by your name on your church mailbox). You can either mail it to Bethel Lutheran Church, PO Box 207, Lester Prairie, MN 55354, or place in the offering plate.

4. Online Giving: Please scan the QR code for contributions to the General fund and the Parking Lot fund.

If you have any questions, please contact the Financial Secretary, Stacy Meyer, at 320-395-2869 or finsec@lpbethel.org.



Noisy Offering

On the 4th Sunday of every month, there is a collection located just outside the sanctuary where you can drop your loose change into a metal can with a satisfying clang! While paper bills and checks may not make the same loud noise, they are also accepted and greatly appreciated. The proceeds will go toward Bethel Youth Camperships for Green Lake Bible Camp.

MID MAY 2025

\$ Contributions: 2,338.20
\$ To Meet Budget: 10,262.01
\$ Difference: -7,923.81
Weekly Average Attendance: 73

FOR THE YEAR 2025

YTD \$ Contributions: 34,371.39
YTD \$ To Meet Budget: 51,310.05
YTD \$ Difference: -16,938.66

JUNE

SUN.	MON.	TUES.	WED.	THURS.	FRI.	SAT.
1 9a worship *4p Resplendor de Gloria	2	3	4 (office hours) 11:30a Bible study 1-4:30p quilting *BULLETIN SUBMISSIONS DUE ON WEDNESDAYS @ NOON	5	6 D DAY	7
8 9a worship *4p DAY OF PENTECOST	9 (office hours) 5p worship & music mtg. 6p council mtg.	10 9-10a Women's Bible study	11 (office hours)* 11:30a Bible study 1-4:30p quilting 6:30p WELCA mtg. FULL MOON	12 2p-3:45p MEFS Mobile Outreach, Bethel parking lot- REMEMBER TO PRE-ORDER!	13	14 FLAG DAY
15 9a outdoor praise worship *4p FATHER'S DAY	16 (office hours)	17 9-10a Women's Bible study	18 (office hours)* 11:30a Bible study 1-4:30p quilting 6p book club	19 JUNETEENTH	20 Pastor Molly on vacation 6/20-7/1 SUMMER BEGINS	21
22 9a worship (Rev. Grant Fischer) *4p 6p Fellowship by the Fire	23 (office hours)	24 9-10a Women's Bible study	25 (office hours)* NO Bible study 1-4:30p Quilting NEWSLETTER DEADLINE	26 2p-3:45p MEFS Mobile Outreach, Bethel parking lot- REMEMBER TO PRE-ORDER!	27	28
29 9a worship (Rev. Grant Fischer) *4p	30 (office hours)	1	2 (office hours)* 11:30a Bible study 1-4:30p Quilting	3	4 INDEPENDENCE DAY	5

- **Online Worship:** <https://www.facebook.com/lpbethel/live>
- **Worship CDs:** Contact the church office if you would like a weekly copy sent to you.
- **Bulletin Submissions Deadline:** Wednesday @ Noon | **Newsletter Deadline:** 25th of the month
- **Most up-to-date Calendar version:** Go to www.lpbethel.org
- **Church Directory:** Go to www.lpbethel.org, Contact Us, Member Directory, then enter the Password. Contact the church office if you need the password to view the directory online, if you would like a hard copy, and if your contact information changes!
- **Seeking volunteers of all ages!** Check out the table in the narthex! Sign up or be a substitute! No experience necessary! Questions? Contact the chairperson listed.
- **Has your contact information changed?** Please, inform the church office of any changes to your contact information to ensure accuracy in the Congregational Directory.

POOLSIDE PLATES

***Free meals for any kids
under age 16 in Lester Prairie***

- *Food provided by Hollywood Catering*
- *Meals served at the Picnic Shelter at the 2nd Avenue Park, Lester Prairie*
- *Serving 12-1pm or until gone!*

JUNE 11TH-PULLED PORK

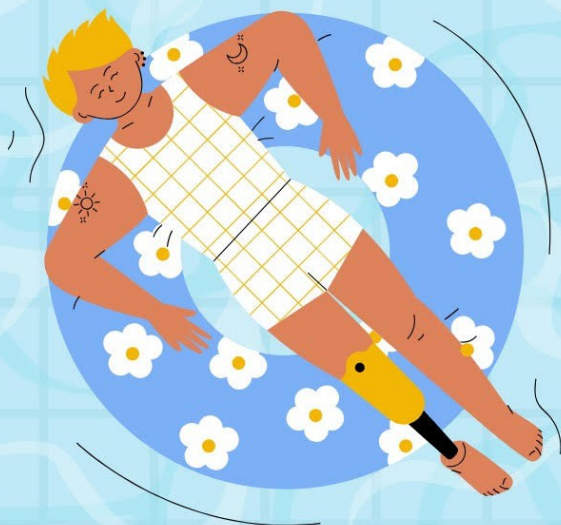
JUNE 25TH-WALKING TACOS

JULY 9TH-BBQ'S

JULY 16TH-MENU TBD

AUGUST 6TH-MENU TBD

AUGUST 13TH-MENU TBD



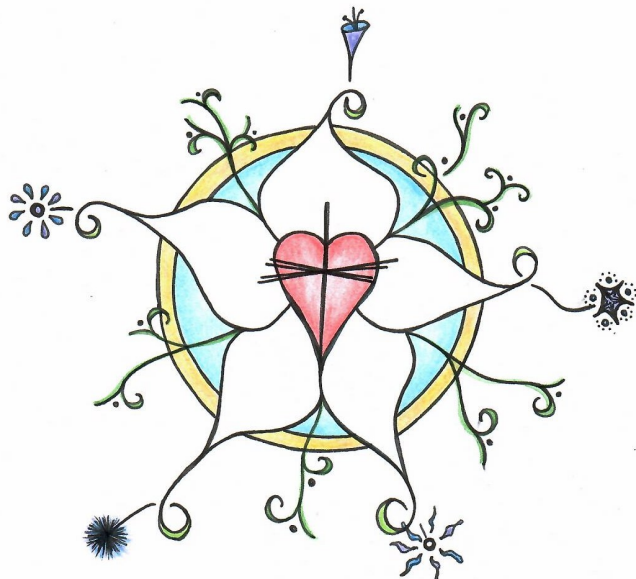
SPONSORED BY:

- *Bethel Lutheran Church of Lester Prairie Endowment Grant*
- *Lester Prairie Youth Task Force*
- *Lester Prairie Lions*
- *St. Paul's Lutheran Church of Lester Prairie*

*Any questions please contact:
Terri Helland- terrihelland@gmail.com*

Welcome to our Bethel community!

Michele, Tammy, Tyler, Livie, Mia, Grant,
Jennifer, Jim, Jaxen, Brayden, and Lynken!



CONTACT US

BETHEL LUTHERAN CHURCH

77 Lincoln AVE N | Lester Prairie, MN
55354 | **MAILING ADDRESS:** PO Box 207

OFFICE 320-395-2125

bethellutheranlp@gmail.com

PASTOR

Rev. Molly Wills
320-339-8169

pastor@lpbethel.org

DON'T FORGET TO STAY CONNECTED!

www.lpbethel.org

www.facebook.com/lpbethel

MISSION STATEMENT

Vibrantly open to the spirit, Bethel Lutheran Church seeks to serve God and its neighbors by joyfully living into the good news of Jesus Christ.



Bethel Lutheran Church

P.O. Box 207

Lester Prairie, MN 55354

PLACE
STAMP
HERE