

BETHEL MESSENGER

June 2026 / Bethel Lutheran Church, ELCA

**SOW. GROW. SHARE.
REPEAT.**

The Bethel Lutheran
Community Garden needs
YOU!

We are looking for
volunteers to help us tend
this season's garden—
whether you have a green
thumb or just a willing spirit,
there's a place for you here!

We need help with planting,
weeding, harvesting, and
general maintenance. Every
hour of help makes a
difference in what we can
grow and share with our
community. No experience is
necessary—just show up
with your enthusiasm!

Talk to Emily Koehler
if you are interested!
emily.e.koehler@gmail.com



*Check out the garden's
new feature on the
next page!*

FROM THE PASTOR

Hello Beloved Bethel members!

Summer is upon us, and I feel like yesterday was just the beginning of January. As you go about your summer traveling, doing activities, working, trying to cram as much as possible into each sun-filled hour and day, remember to take some time to just be.

A nice contemplative spiritual practice you could use this summer to make sure you take that time is to stop and sit or stand wherever you are, shut your eyes, pay attention to your breathing, and repeat this in your head:

Be still and know that I am God.

(breathe in & out)

Be still and know that I am.

(breathe in & out)

Be still and know.

(breathe in & out)

Be still.

(breathe in & out)

Be.

(breathe in & out)

It's important for our minds, bodies, and souls to take the time to just be with God, even if it's for the span of five deep breaths. Our racing minds calm down, our dashing bodies get a moment to rest, and our souls find a little peace to heal.

May your summer be full of joy.

May you be humbled with awe at all of creation, the plants, animals, and people, around you. And may you experience peace and love at the end of each day.

Love,
Pastor Molly B. Wills



WHAT'S NEW IN BETHEL'S COMMUNITY GARDEN?



Volunteers built raised garden beds for Bethel's Community Garden on May 20th. Bethel members will take care of these beds this summer, but next year the plan is to rent them to anyone interested!

The hope for these raised beds is to give people with mobility issues a chance to utilize the community garden more!

Thank you to these volunteers for their time and talent!



Do you have garden flowers you would like to share for the altar? Please let Judy Angval know when you'd like to bring them!



MISSION AND MINISTRIES

GOD has a MINISTRY for YOU in this CHURCH and a MISSION for YOU in the WORLD.

FARE FOR ALL



Fare for All is coming up on Thursday, June 11, 3:30 p.m.-5:30 p.m., Oak Heights Covenant Church, 1398 S Grade RD SW, Hutchinson. This is a pop-up grocery store in our community that offers quality, nutritious, budget-friendly food packs featuring fresh fruits, vegetables, and frozen meats. No pre-orders necessary—just stop by and shop at the monthly event! Visit fareforall.org to learn more.

COMMON CUP FOOD DONATIONS

We are collecting applesauce cups and fruit cups to donate to Common Cup Ministry's Weekend Food Program for school children in need within McLeod County. Donations may be left in the Common Cup Corner basket in the narthex. (Members of Bethel also pack weekend bags for the students at the Lester Prairie school during the school year.) If you have questions about the program, donating, or are interested in volunteering to pack the bags, Jan Smith would love to visit with you!

MCLEOD EMERGENCY FOOD SHELF MOBILE OUTREACH



Driving Away Hunger aims to address transportation and mobility challenges related to food access in our communities. The Mobile Outreach vehicle is stocked with shelf-stable pantry items, fresh produce, frozen proteins, grains, dairy, and bakery treats. **STOP & SHOP the BUS at no cost to you!**

Orders must be placed before delivery dates. Orders are pre-packed by staff for on-site distribution. A limited number of walk-up portions or "emergency boxes" will be available at each delivery site. *The staff is not permitted to assist with carrying groceries home.*

Full grocery distributions are available once (1x) per month, per household. Check the Mobile Outreach schedule on Bethel's bulletin board or on our front door for distribution dates.

If you have any questions, call 320-864-2088 or email glencoe@mcleodemergencyfoodshelf.org

All sites are OPEN to the PUBLIC! Produce is available weekly. One visit per week across all sites: Hutchinson, Glencoe, and Mobile.

Schedule changes are announced at:

www.mcleodemergencyfoodshelf.org

and www.facebook.com/McLeodFoodShelf. Follow us!

NEXT DISTRIBUTION DATES

Wednesday, June 3 & 24
Bethel's parking lot
2:30 PM

Scan here to place
your next order



SERVING SUNDAY MORNING

We have volunteer sign-up sheets posted on the bulletin board in the narthex, and we'd love for anyone of any age to consider serving on Sunday mornings. There are some wonderful opportunities available—greeter, usher, lector, communion assistant, or candlelighter. You can also help by preparing communion or by making coffee and bringing treats to share! If you have questions, the chairperson's name and number are next to each role. No experience is necessary—someone will gladly show you how! ***Please check your availability over the summer!***

PASTORAL CARE COVERAGE

June 1-4 and June 23-July 6: Rev. Erik Karlson, 507-766-5870, Pastor of Christ Lutheran Church, Glencoe.

FAITH AND FELLOWSHIP

LEARNING opportunities to DEEPEN YOUR RELATIONSHIP with GOD.

BETHEL BOOK CLUB – JUNE

The Let Me Theory by Mel Robbins

What if the key to happiness, success, and love was as simple as two words? If you've ever felt stuck, overwhelmed, or frustrated with where you are, the problem isn't you. The problem is the power you give to other people. Two simple words—*Let Them*—will set you free. Free from the opinions, drama, and judgments of others. Free from the exhausting cycle of trying to manage everything and everyone around you. *The Let Them Theory* puts the power to create a life you love back in your hands—and this book will show you exactly how to do it. **Discussion date: June 17**

SAVE THE DATE—SUNDAY, JUNE 28, 9:00 A.M.

Join us for our annual worship & potluck picnic at the Bergen Church site, Bergen Township! Bring lawn chairs and/or blankets and a dish to share! We hope to see you there!

Directions to the Bergen Church site: Go south of Lester Prairie on County Road 1. At the first curve, turn left on Babcock Ave. After 2 miles, the road turns to gravel and becomes Bergen Road. Continue south on Bergen Road, approximately 3^{1/2} miles, and you will come to an intersection. The Bergen Church site is on the right-hand side of the intersection.

(There will not be a worship service at Bethel Church on this day.)

SAVE THE DATE—MONDAY, JULY 27, 6:00 P.M.

A Glass Mosaic event is planned for Bethel women and girls ages 15 and up. We will start with a meal followed by the mosaic project, instructed by Linda Reinert of Mosaics at the Farm. More details are coming soon!

HAPPY BAPTISM!

10 Dick D.
11 Bruce Y.
11 Eleanor G.
16 Stacy M.
18 Matt M.
22 Kim W.
23 Lois S.
27 Roger M.



HAPPY BIRTHDAY!

3 Katie R.
4 Sarah R.
5 Etta H.
8 Carolyn B.
12 Jacob D.
14 Avery B.
15 Jim M.
16 Alex H.
16 Brayden M.
17 McCoy H.
20 Matt P.
30 Jim M.



SAVE THE DATE!

Vacation Bible School

August 2, 9, & 16
after worship (approx. 10 a.m.)
until 12:30 p.m.
All ages are welcome to attend!

SAVE THE DATE!

Outdoor worship

July 19 & August 16
9:00 a.m., Bring a lawn chair or
blanket

SAVE THE DATE!

Women's Retreat

September 11-13
Medayto Lodge on Green Lake
Spicer, MN

POOLSIDE PLATES

**Free meals for any kids
under age 16 in Lester Prairie**

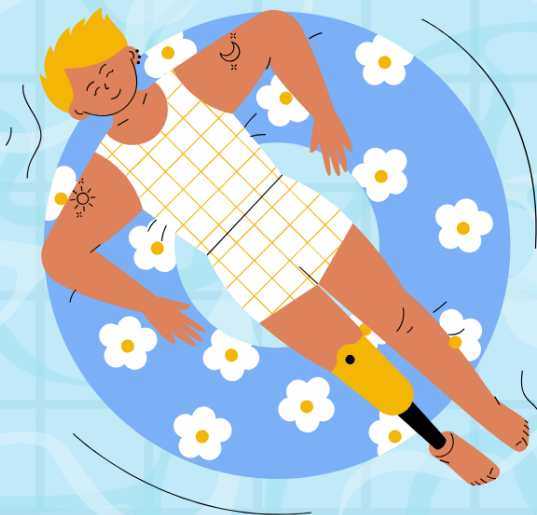
- Food provided by Hollywood Catering
- Meals served at the Picnic Shelter at the 2nd Avenue Park, Lester Prairie
- Serving 12-1pm or until gone!

**JUNE 10TH
JULY 15TH
AUGUST 19TH**



SPONSORED BY:

- Bethel Lutheran Church of Lester Prairie Endowment Grant
- Lester Prairie Youth Task Force
- Lester Prairie Lions
- St. Paul's Lutheran Church of Lester Prairie
- St. Paul's Sandwich Ministry- Lester Prairie



Any questions please contact:
Terri Helland- terrihelland@gmail.com

JUNE 2026

SUNDAY	MONDAY	TUESDAY	WEDNESDAY	THURSDAY	FRIDAY	SATURDAY
	1 <i>(pastor vacation through 6/4)</i>	2	3 (bulletin submissions due noon on Wednesdays) 2:30p MEFS outreach bus 6:30p WELCA mtg.	4	5 <i>(SW MN Synod Assembly)</i>	6 <i>(SW MN Synod Assembly)</i>
7 9a worship	8 (evening office hours) 5 p.m. worship & music mtg. 6p council mtg.	9	10 (office hours) 11:30a Bible study <i>(Noon-1 poolside plates 2nd Ave. shelter)</i> 1p-4p quilting	11	12	13
14 9a worship w/holy baptism	15 (office hours)	16	17 (office hours) 11:30a Bible study 1p-4p quilting 6:30p book club discussion	18	19	20
21 (Father's Day) 9a worship	22 (office hours)	23 <i>(pastor on continuing education trip through 7/6)</i>	24 (office hours) 1p-4p quilting 2:30p MEFS outreach bus	25 (newsletter deadline)	26	27
28 9a annual Bergen Church site worship & potluck	29	30	1	2	3	4 (Independence Day)

Bulletin Submission Deadline: Wednesday Noon | **Newsletter Deadline:** 25th of the month

Online Worship: <http://www.facebook.com/lpbethel/live> | **Online Calendar:** www.lpbethel.org

Church Directory: www.lpbethel.org To access the Directory, click Contact us, Member Directory, and enter the password. If you need the password to view the directory, would like a hard copy (some copies are available in the narthex), or if your contact information has changed, please contact the church office.

BETHEL LUTHERAN CHURCH COUNCIL MEETING MINUTES, MAY 11, 2026

Council Members Present: President: Dave Gohl, Vice President: Jean Hallberg, Secretary: Julie Hanson, Treasurer: Jill Duncan, Finance Board: Peggy Wick, Education Board: Katie Radtke and Jan Smith, Trustee Board: Jeff Hanson and Pastor Molly.

Call To Order: The meeting was called to order at 6:03 P.M. by President Dave Gohl, followed with opening prayer by Pr. Molly.

Council Business:

A **motion** was made by Sara Jepsen and seconded by Jean Hallberg to approve the agenda. **Motion carried.**

Pastor Molly:

- Visited our homebound.
- Attended a pastor's Bible study.
- Led weekly Bible study.
- Attended the Youth Task Force Social at St. Peter's Lutheran.
- Updated the bi-weekly "Bethel Happenings & Celebrations" hanging in the bathrooms.
- Attended a First Call Gathering in St. Peter on April 23rd.
- Celebrated First Communion during the April 26th worship.
- Celebrated our graduates during the May 3rd worship.
- Led Intergenerational Sunday School (last one was May 10th)
- Started working on the confirmation schedule for the fall
- Led monthly worship meeting. Bergen Worship will be on June 28th – Bring lawn chairs/blankets & food to share. Outdoor services will be held on July 19th and August 16th.
- I will be on vacation May 15-17th and May 28th – June 4th.
- I will be taking a Continuing Education trip from June 23rd to July 5th.

New Business:

1. An annual meeting date is scheduled for January 24, 2027, after church.
2. Church Mutual Insurance – Mr. Cory Knott. The presentation was given by Cory and was very informative. A decision will be made by June 1st if there is a change of insurance.
3. Common Cup: Jan Smith is a representative of Bethel. She reported that Lisa Klobe, Pete and Jean Hallberg went to the meeting on April 20th. Jan shared how Common Cup works and the areas of need (donations). It was suggested to have a representative from Common Cup come to Bethel to share what it's all about.

Old Business:

1. Discussed having a council retreat in the fall at Green Lake Waters Edge. Jill Duncan to research dates of availability.
2. Prins Bank: There are still questions/concerns to discuss with the new bank.
3. Prairie Days: Bethel will be represented again this year in the parade. There were some good ideas shared.

Secretary Minutes:

- A **motion** was made by Jean Hallberg and seconded by Peggy Wick to approve the previous month's secretary minutes. **Motion carried.**

Treasurer Report:

- The three CDs are coming due in July. There was a discussion about how to continue with these to benefit Bethel financially.
- A **motion** was made by Sara Jepsen and seconded by Jan Smith to approve the previous month's treasurer's report. **Motion carried.**

Financial Secretary Report:

- A **motion** was made by Jean Hallberg and seconded by Peggy Wick to approve the previous month's financial secretary's report. **Motion carried**

Board Reporting:

1. Education: Milestone teaching will begin next fall. A survey to go out to parents of Sunday school kids (VBS) when the best time will/could be for Vacation Bible School. The dates discussed are the 1st & 3rd Sunday in August. There are plans for some intergenerational material. Getting the word out there (in the community) for VBS was a topic. The possibility of putting information on doorknobs.
2. Finance: Stewie is working hard at it and is doing a good job!
3. Trustee: Discussed the gas meter relocation. At this time, it's on hold, waiting for Center Point Energy to respond. Repairs were completed on the church's lawn mower by Jeff Hanson. However, it is on borrowed time. Need to keep on the lookout for another lawn mower.

A **motion** was made by Jean Hallberg and seconded by Peggy Wick to close the meeting. **Motion carried.** The meeting closed with the Lord's Prayer and Closing Benediction by President Dave Gohl

Respectfully submitted by Secretary Julie Hanson

Next scheduled meeting date: Monday, June 8th, 6:00 P.M.

GIVING PAGE

3 WAYS TO MAKE GIVING EASIER!

1. VANCO ONLINE

Discover the simplicity of giving with Vanco Online, our user-friendly eGiving tool! You can make one-time gifts or set up recurring donations to ensure your support continues. Visit our church website at www.lpbethel.org and click the “Give” button or scan the QR code to get started.

HOW TO USE VANCO ONLINE:

1. **Select Your Funds and Amount**—Choose your fund and click “Donate.” Select your donation amount and frequency, then proceed to payment.

2. **Enter Payment Method**—Enter your credit card, debit card, or checking account information. You can save your payment information for future donations by creating a free account. (From your Vanco account, you can review your giving history, manage recurring donations, or update payment information.)

3. **Complete Donation**—Review your gift and click “Submit.”
How to Have Automatic eGiving Set Up for You: Complete an authorization form (forms are on the wall in the Narthex) and place it in the Financial Secretary’s mailbox.

2. TEXT + GIVE

Donate easily and quickly by texting! Text giving is fast and flexible. You can give right away, set up a weekly donation, or respond to special requests—all in just a few seconds. To register, use your phone; it’s simple! You can also set up recurring donations. To donate, text the dollar amount to [866-298-7547](tel:866-298-7547)

3. BETHEL OFFERING ENVELOPE

We encourage you to fill out an envelope and include your assigned envelope number from your church mailbox. You can mail it to Bethel Lutheran Church, PO Box 207, Lester Prairie, MN 55354, or simply place it in the offering plate during service. **If you have any questions, please contact our Financial Secretary, Stacy, at 320-395-2869 or finsec@lpbethel.org.**

BETHEL WISH LIST

The council has compiled a list of items for our church and congregation, including both wishes and needs.

Riding lawn mower:
pre-owned-\$2,000 to \$4,000/new-\$13,000 to \$18,000

Paper shredder: \$35 to \$485

Security camera system:
\$1,200 to \$5,000

Doorbell for the [locked] front door: \$600 to \$1,000

Battery-operated weed whip: *Thank you for your donation!*

Two restroom paper towel dispensers: *Thank you for your donation!*

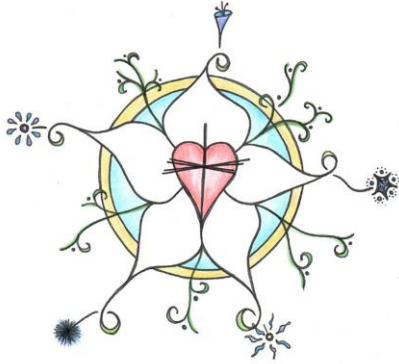
Please remember that any donations towards these items should be in addition to your regular giving that helps maintain our budget. Your support is greatly appreciated, and donations can be made anonymously. For more information, feel free to contact any Executive Board member.



Your monetary gifts to our church during April totaled \$10,632.69. For the second month in a row, giving has exceeded our budgeted need, making for a healthier financial picture. Thank you!



SCAN THE QR CODE
TO GET STARTED



BETHEL'S MISSION STATEMENT

Vibrantly open to the Spirit, Bethel Lutheran Church seeks to serve God and its neighbors by joyfully living into the good news of Jesus Christ.

CONTACT US

Bethel Lutheran Church

77 Lincoln Ave. N. | P.O. Box 207

Lester Prairie, MN 55354

320-395-2125

bethellutheranlp@gmail.com

www.lpbethel.org

www.facebook.com/lpbethel

Pastor Molly Wills

320-339-8169

pastor@lpbethel.org

BETHEL LUTHERAN CHURCH

77 Lincoln Ave. N. | P.O. Box 207

Lester Prairie, MN 55354

PLACE
STAMP
HERE

Recipient Name

Street Address

City, ST ZIP Code